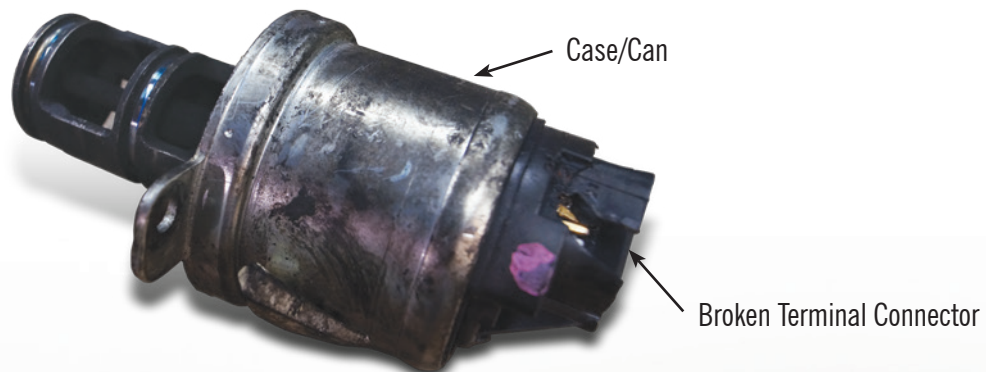


CORE POLICY AND DEDUCTION

EGR VALVES

50% LESS CREDIT

- Broken terminal connector and/or broken plastic parts
- Cracked, broken, burnt or damaged case/can
- Obvious valve exterior damage or missing components



All cores must be returned in the original box to receive full core credit.

All cores not returned in the box receive maximum 10% core credit.

Core credit allowed only for units in the current programs.

Only exchange cores accepted for core credit.